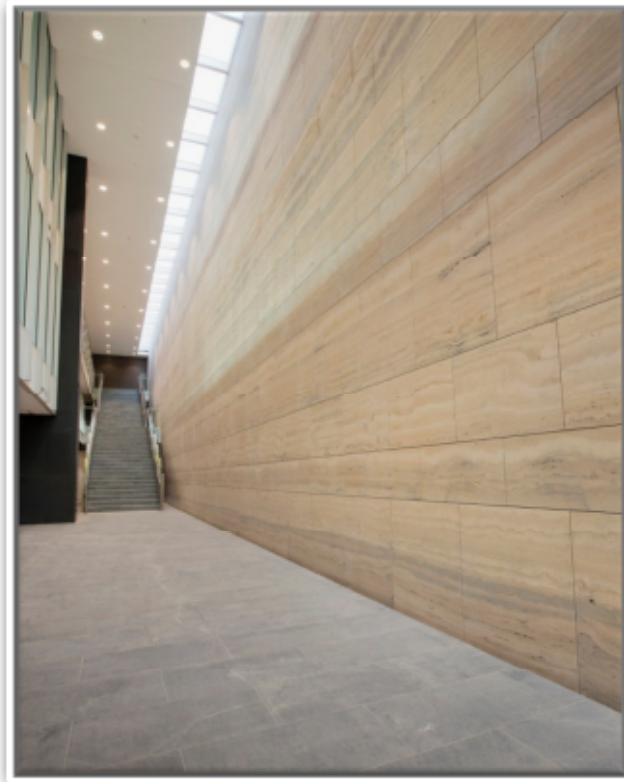


Project Overview

511 Church St – Internal Cladding & Paving

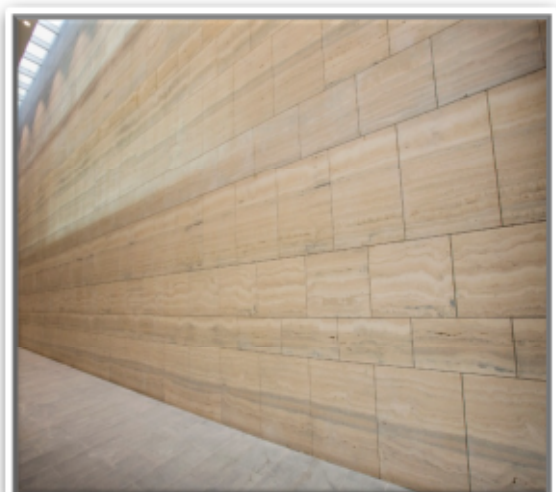
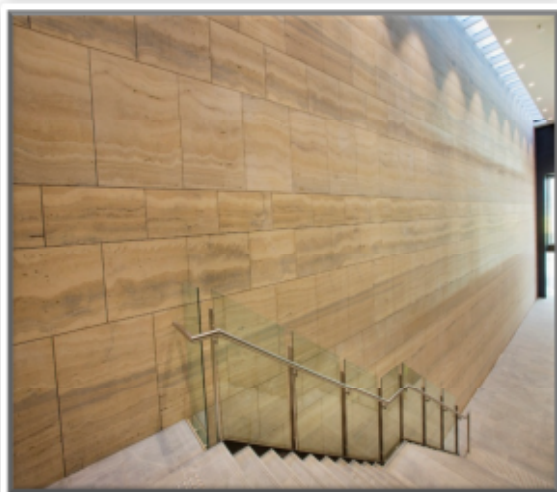


PROJECT SUMMARY

Builder: Hacer

- Floors – Atlantic Storm
- Walls – 30 mm Roman Silver Travertine

Approx Coverage: Wall = 260 m²
Floor = 380 m²



Brief Project Overview: Baron Forge Contracting completed the wall cladding and floor paving project for Hacer. The scope also included the stairs and tactiles. The wall was first shop drawn and under the direction of the architect the wall cladding was matched to ensure continuity of colour and veining across the wall. The wall is approx. 8 metres high and 50 metres long